

# House Rules

- No one under 18 years of age is permitted in the Bingo Hall.
- Smoking is not permitted while waiting in line or in designated non-smoking areas.
- Each player must purchase an admission package; no splitting of packs allowed.
- It is the player's responsibility to shout "BINGO" loud enough to alert the caller to stop the game.
- Daubers must be used for all paper bingo games.

- Once the game is closed or the Caller starts to call the letter of the next ball, no previous BINGOs will be honored and the game shall continue.
- The number drawn and called is official. The bingo flashboard and TV monitor are for players' convenience only.
- Player's name must appear on their receipt and must be on display at all times.
- No seat saving. Only a bingo package and an admission receipt for the current session will hold a chair.
- It is the player's responsibility to look after all unplayed paper. No refunds or exchanges. Bingo paper is only valid for the session in which it was purchased.
- Multiple winners will share the total cash value for each game equally at each level.
- We will make every effort to avoid placing duplicate cards into play. However, if duplicates do occur, there will be no compensation offered.
- One electronic bingo device per guest.
- Malfunction of electronic bingo devices voids all pay and play. Management is not responsible for bingo equipment failure.
- Electronic bingo devices may not be purchased with another player's Club card.
- Any altered, mutilated or defaced bingo cards, pull-tabs or door prize tickets will not be honored.
- Only one door prize per person per session.
- Any bent door prize tickets are invalid for the door prize drawings.
- Door prize drawings for merchandise and certificates may not be redeemed for cash or exchanged.
- All door prizes must be claimed with a valid picture ID by the end of the bingo session; all unclaimed door prizes will be voided.
- For all fill-in-your-numbers style bingo games, a blue or black ink pen must be used and the numbers must be legible; otherwise the BINGO will be invalid.
- It is the player's responsibility to put the original copy of the fill-in-your-numbers style bingo games into the proper boxes at the end of the table (e.g. Pick 8, Pick Yur Platter, Do it Yourself). Boxes will then be locked and no other cards will be accepted.
- Bingo winners of \$1,200 or more and pull-tab winners of \$600 or more must have two forms of identification, a social security card and a valid picture ID to collect winnings.
- A valid picture ID is required when redeeming Fire Keeper's Club® card points, credit cards and debit cards at the admission booth.
- Talking must be kept to a minimum while BINGO is being played.
- While the bingo session is in progress, personal electronic devices (e.g. cell phones, pagers, etc.) may not be used in the Bingo Hall. Please turn off ringer and/or phone to avoid disruption of play.
- Verbal abuse or the use of abusive language will not be tolerated.
- Pull-tabs are void if taken out of the building.
- No food or beverages may be brought into the Bingo Hall from outside this building.
- Drugs are strictly prohibited in the Bingo Hall.
- No solicitation of any kind is allowed in the Bingo Hall.
- Potawatomi Hotel & Casino is not responsible for lost or misplaced admission receipts or bingo paper.
- Potawatomi Hotel & Casino is not responsible for lost or stolen articles.
- Management reserves the right to change bingo sessions, prize amounts and starting times without notice.
- Management reserves the right to refuse service to any person. If it becomes necessary to ask a player to leave, refund for purchases will not be made.
- Potawatomi Hotel & Casino is not responsible for typographical errors.
- The decision of Management is final.



1721 WEST CANAL STREET • MILWAUKEE, WI 53233 • 1-800-PAYSBIG • PAYSBIG.COM  
 MUST BE AT LEAST 18 YEARS OLD TO PLAY BINGO • WINNERS RESPONSIBLE FOR ALL TAXES • MANAGEMENT RESERVES ALL RIGHTS • GAMBLING PROBLEM? CALL 1-800-426-2535  
 ©2017 FOREST COUNTY POTAWATOMI COMMUNITY, WISCONSIN

BIN17018

**Paper Buy-in:**  
**6-on Level 1 - \$13**  
**6-on Level 2 - \$26**

**Computer Buy-in:**  
**12 Level 1 cards for \$26**  
**12 Level 2 cards for \$52**

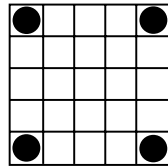
**Special Pack: \$12**

**Hotball: \$1**

**Discount packages available on handheld computers**

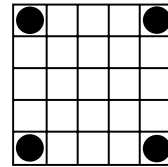
**WARM-UPS**

**GAME 1**  
Straight Line  
or Four Corners



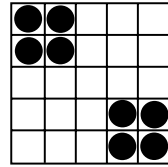
Prize: \$100

**GAME 2**  
Straight Line  
or Four Corners



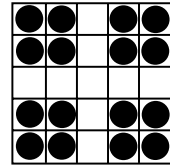
Prize: \$100

**GAME 3**  
Two Stamps  
In Corners



Prize: \$100

**GAME 4**  
Four Stamps  
As Shown

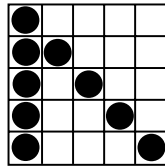


Prize: \$300

Same  
Sheet

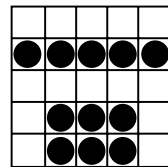
**GAME 5**  
Crazy Bingo

Two Straight Lines | 1st Number Wild



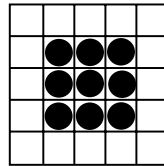
Prize: Level 1: \$500  
Level 2: \$1,000  
& Monitor

**GAME 6**  
One Horizontal Line  
& Six-Pack  
No Overlapping



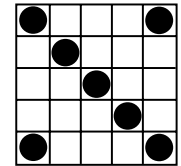
Prize: Level 1: \$500  
Level 2: \$1,000  
& Monitor

**GAME 7**  
Nine-Pack  
Anywhere



Prize: Level 1: \$500  
Level 2: \$1,000  
& Monitor

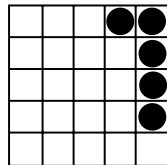
**GAME 8**  
Double Bingo  
4 Corners Count



Prize: Level 1: \$500  
Level 2: \$1,000  
& Monitor

**PULL TAB GAME**

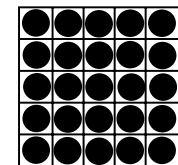
**GAME 9**  
Five Around  
The Corner  
Not Included: \$1



Prize: \$300  
in Pull Tabs

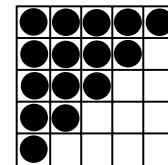
**3-SECOND SPECIAL**

**GAME 13**  
Coverall  
Not Included: \$1



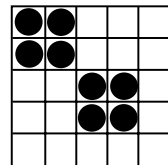
Prize: \$300

**GAME 10**  
Crazy Large Triangle  
In Any Corner



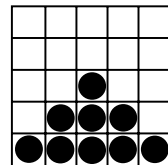
Prize: Level 1: \$500  
Level 2: \$1,000  
& Monitor

**GAME 11**  
Two Floating Stamps  
No Overlapping



Prize: Level 1: \$500  
Level 2: \$1,000  
& Monitor

**GAME 12**  
Crazy Pyramid  
From Any Direction



Prize: Level 1: \$500  
Level 2: \$1,000  
& Monitor

**POT OF GOLD SPECIAL**

Not Included: \$3

**GAME 16** - Match Three  
Posted Amount or \$100

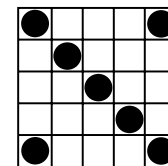
**GAME 17** - Outline Diamond  
Posted Amount or \$200

**GAME 18** - Large Frame  
Posted Amount or \$300

**GAME 19** - Full Card  
Posted Amount or \$1,000

Full Card in 46#'s or Less Pays  
\$500,000 Paid in Annuity

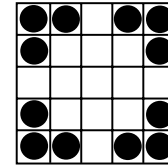
**GAME 20**  
Double Bingo  
4 Corners Count



Prize: Level 1: \$500  
Level 2: \$1,000  
& Monitor

**CHARITY SPECIAL**

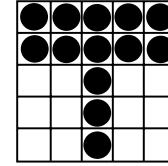
**GAME 21**  
Four Brackets or  
Filled-in Diamond



Prize: Level 1: \$1,000  
Level 2: \$2,000  
& Monitor

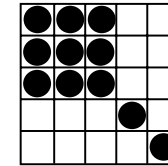
**GAME 22**  
Hammerhead T

As Shown | Not Included: \$2



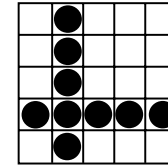
Prize:  
50% to Winner  
50% to Heart of  
Canal Street

**GAME 23**  
Crazy Large Kite  
In Any Corner



Prize: Level 1: \$500  
Level 2: \$1,000  
& Monitor

**GAME 24**  
Any Two Lines

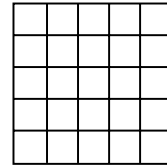


Prize: Level 1: \$500  
Level 2: \$1,000  
& Monitor

**TBA SPECIAL**

**GAME 25**  
TBA

Game Changes Seasonally



Prize: TBA

**ALL-STAR SPECIAL**

**GAME 26** ★  
Posted amount or \$100

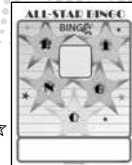
**GAME 27** ★★  
Posted amount or \$200

**GAME 28** ★★★  
Posted amount or \$300

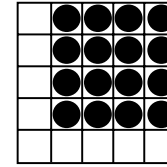
**GAME 29** ★★★★  
Posted amount or \$400

**GAME 30** ★★★★★  
Progressive Jackpot or \$1,000

5★'s in 48 #'s or less wins a spin of the  
jackpot wheel with a top prize of  
\$1,000,000!

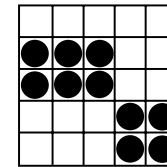


**GAME 31**  
4 X 4  
1st Number Wild Anywhere



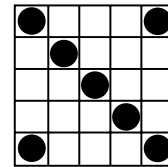
Prize: Level 1: \$500  
Level 2: \$1,000  
& Monitor

**GAME 32**  
Six-Pack &  
Postage Stamp  
No Overlapping



Prize: Level 1: \$500  
Level 2: \$1,000  
& Monitor

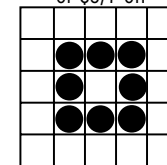
**GAME 33**  
Double Bingo  
4 Corners Count



Prize: Level 1: \$500  
Level 2: \$1,000  
& Monitor

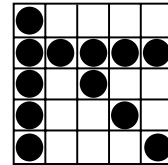
**PICK 8 SPECIAL**

**GAME 35**  
Pick Eight  
Not Included: \$1/1-on  
or \$5/7-on



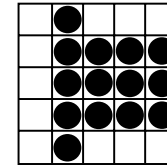
Prize: 20#'s or  
Less Wins Jackpot  
Must Go: \$500

**GAME 34**  
Triple Bingo  
3 Straight Lines



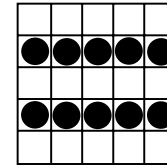
Prize: Level 1: \$1,000  
Level 2: \$2,000  
& Monitor

**GAME 36**  
Nine-Pack &  
Any Vertical Line



Prize: Level 1: \$500  
Level 2: \$1,000  
& Monitor

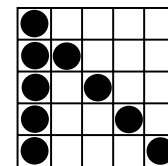
**GAME 37**  
Two Horizontal  
Lines



Prize: Level 1: \$500  
Level 2: \$1,000  
& Monitor

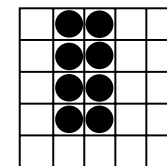
**GAME 38**  
Crazy Bingo

Two Straight Lines | 1st Number Wild



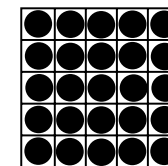
Prize: Level 1: \$500  
Level 2: \$1,000  
& Monitor

**GAME 39**  
Block of Eight  
Anywhere



Prize: Level 1: \$500  
Level 2: \$1,000  
& Monitor

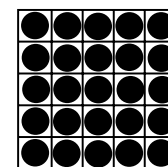
**GAME 40**  
Coverall



Prize: Level 1: \$1,000  
Level 2: \$2,000  
& Monitor

**BONANZA SPECIAL**

**GAME 41**  
Coverall



Prize: Jackpot or \$1,199  
Filled card in 50#'s or less to  
win Progressive Jackpot!