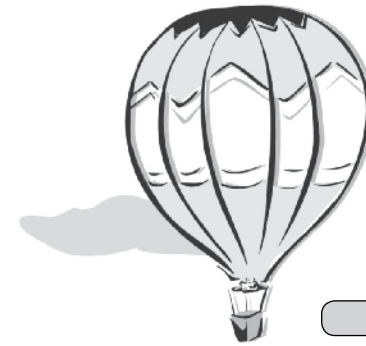


BINGO HOUSE RULES

- No one under 18 years of age is permitted in the Bingo Hall.
- Smoking is not permitted while waiting in line or in designated non-smoking areas.
- Each player must purchase an admission package; no splitting of packs allowed.
- It is the player's responsibility to shout "BINGO" loud enough to alert the caller to stop the game.
- Daubers must be used for all paper bingo games.
- Once the game is closed or the Caller starts to call the letter of the next ball, no previous BINGOs will be honored and the game shall continue.
- The number drawn and called is official. The bingo flashboard and TV monitor are for players' convenience only.
- Player's name must appear on their receipt and must be on display at all times.
- No seat saving. Only a bingo package and an admission receipt for the current session will hold a chair.
- It is the player's responsibility to look after all unplayed paper. No refunds or exchanges. Bingo paper is only valid for the session in which it was purchased.
- Multiple winners will share the total cash value for each game equally at each level.
- We will make every effort to avoid placing duplicate cards into play. However, if duplicates do occur, there will be no compensation offered.
- One electronic bingo device per guest.
- Malfunction of electronic bingo devices voids all pay and play. Management is not responsible for bingo equipment failure.
- Electronic bingo devices may not be purchased with another player's Club card.
- Any altered, mutilated or defaced bingo cards, pull-tabs or door prize tickets will not be honored.
- Only one door prize per person per session.
- Any bent door prize tickets are invalid for the door prize drawings.
- Door prize drawings for merchandise and certificates may not be redeemed for cash or exchanged.
- All door prizes must be claimed with a valid picture ID by the end of the bingo session; all unclaimed door prizes will be voided.
- For all fill-in-your-numbers style bingo games, a blue or black ink pen must be used and the numbers must be legible; otherwise the BINGO will be invalid.
- It is the player's responsibility to put the original copy of the fill-in-your-numbers style bingo games into the proper boxes at the end of the table (e.g. Pick 8, Pick Yur Platter, Do it Yourself). Boxes will then be locked and no other cards will be accepted.
- Bingo winners of \$1,200 or more and pull-tab winners of \$600 or more must have two forms of identification, a social security card and a valid picture ID to collect winnings.
- A valid picture ID is required when redeeming Fire Keeper's Club® card points, credit cards and debit cards at the admission booth.
- Talking must be kept to a minimum while BINGO is being played.
- While the bingo session is in progress, personal electronic devices (e.g. cell phones, pagers, etc.) may not be used in the Bingo Hall. Please turn off ringer and/or phone to avoid disruption of play.
- Verbal abuse or the use of abusive language will not be tolerated.
- Pull-tabs are void if taken out of the building.
- No food or beverages may be brought into the Bingo Hall from outside this building.
- Drugs are strictly prohibited in the Bingo Hall.
- No solicitation of any kind is allowed in the Bingo Hall.
- Potawatomi Hotel & Casino is not responsible for lost or misplaced admission receipts or bingo paper.
- Potawatomi Hotel & Casino is not responsible for lost or stolen articles.
- Management reserves the right to change bingo sessions, prize amounts and starting times without notice.
- Management reserves the right to refuse service to any person. If it becomes necessary to ask a player to leave, refund for purchases will not be made.
- Potawatomi Hotel & Casino is not responsible for typographical errors.
- The decision of Management is final.



Weekday Matinee PROGRAM



Shaded games not included in your package.

Paper Buy-in • \$5 per 6-on
Special Pack \$11 • Hotball \$1
Monday–Friday Games Start at 1 p.m.
Computer Buy-in 24 cards \$20



BINGO 

1721 WEST CANAL STREET • MILWAUKEE, WI 53233
1-800-PAYSBIG • PAYSBIG.COM

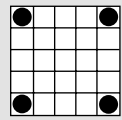
WARM UPS

Floor Sales: \$2 for a 9-on • These games are not included in your package.

AQUA

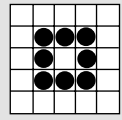
These games are played on the same sheet.

Game 1
Single Bingo
or Four Corners



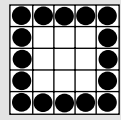
Prize: \$100

Game 2
Small Frame



Prize: \$100

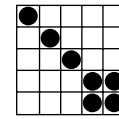
Game 3
Large Frame



Prize: \$300



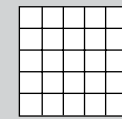
BLACK
Game 20
Crazy Kite
Any Direction



Prize: \$200
\$300
\$400

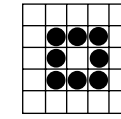
TBA SPECIAL

Game 21
Game Changes
Seasonally
Pattern TBA



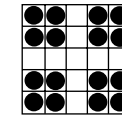
Prize: TBA

AQUA
Game 22
Small Frame
As Shown



Prize: \$200
\$300
\$400

BLUE
Game 23
Clover Leaf
\$1/Extra 3-on
Progressive



Prize: Jackpot
or \$500

Pot of Gold

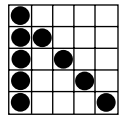
Floor Sales: \$3

Game 24 • Match three
Posted amount or \$100
Game 25 • Outline diamond
Posted amount or \$200
Game 26 • Large picture frame
Posted amount or \$300
Game 27 • Coverall
Posted amount or \$500

Prize for coverall in 46 numbers or less: **\$500,000** paid in annuity

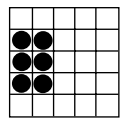


BLUE
Game 4
Crazy Bingo
Two Straight Lines,
First Number Wild



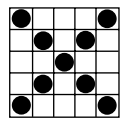
Prize: \$200
\$300
\$400

ORANGE
Game 5
Six Pack
No FREE Space



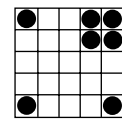
Prize: \$200
\$300
\$400

GREEN
Game 6
Letter "X"
As Shown



Prize: \$200
\$300
\$400

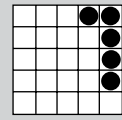
YELLOW
Game 7
Stamp &
Four Corners



Prize: \$200
\$300
\$400

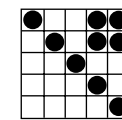
GRAY
Pull-Tab Special

Game 8
Five Around
the Corner
Floor Sales: \$1



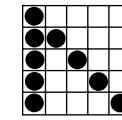
Prize: \$250
in pull-tabs

ORANGE
Game 28
Line & Stamp
No Overlapping



Prize: \$200
\$300
\$400

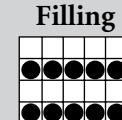
GREEN
Game 29
Crazy Bingo
Two Straight Lines,
First Number Wild



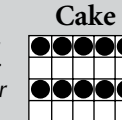
Prize: \$200
\$300
\$400

PURPLE
LAYER CAKE SPECIAL

Game 30
Layer Cake
Filling
Layer
Cake
Floor Sales: \$1 per 3-on

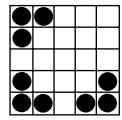


Prize: \$250



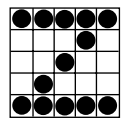
Prize: \$500

YELLOW
Game 31
Three Brackets
In Any Three Corners



Prize: \$200
\$300
\$400

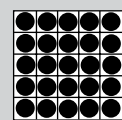
PINK
Game 9
Letter "Z"
Floor Sales: \$1
Progressive



Prize: Jackpot
or \$500

Three-Second Coverall

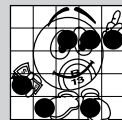
Game 10
Three-Second
Coverall
Floor Sales: \$1



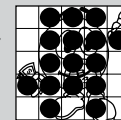
Prize: \$200

B-13 Special

Game 11
Eyes, Hands
& Feet
Game 12
Full Body



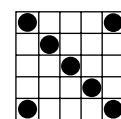
Floor Sales: \$2 same sheet



Prize: Jackpot
or \$313

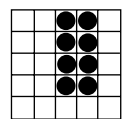
Prize: Jackpot
or \$513

GRAY
Game 13
Double Bingo
Four Corners
Count



Prize: \$200
\$300
\$400

OLIVE
Game 14
Eight Pack
FREE Space
Counts



Prize: \$200
\$300
\$400

Pick Eight Special

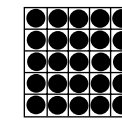
Game 32
Pick Eight Special
Floor Sales:
\$1/1-on \$5/7-on



Get all eight #s called in 20 #'s or less

Prize: Jackpot
or \$500

PINK
Game 33
G-Ball Coverall
\$1/Extra 3-on
Coverall In Exact
Number of First
G-Ball Called Wins



Prize: Jackpot
or \$1,000

Bonanza Special

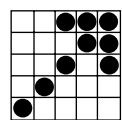
Game 34
Bonanza
Floor Sales: \$1



Be the first to fill your card in 50 #'s or less

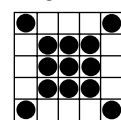
Prize: Jackpot
or \$500

BROWN
Game 15
Crazy Arrow
In Any Direction



Prize: \$200
\$300
\$400

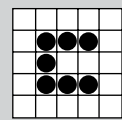
RED
Game 16
Sputnik
\$1/Extra 3-on
Progressive



Prize: Jackpot
or \$500

TAN
Charity Game

Game 17
Crazy Horseshoe
Floor Sales: \$1

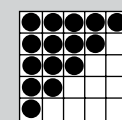


Prize: 50% to winner
50% to Heart of Canal
Street Fund

INTERMISSION

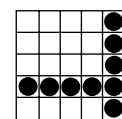
ORANGE
Triangle Special

Game 18
Triangle Game
Floor Sales: \$1



Prize: Shaded \$500
Unshaded \$250

PURPLE
Game 19
Double
Hardway
No FREE Space



Prize: \$200
\$300
\$400

