

House Rules

- No one under 18 years of age is permitted in the Bingo Hall.
- Smoking is not permitted while waiting in line or in designated non-smoking areas.
- Each player must purchase an admission package; no splitting of packs allowed.
- It is the player's responsibility to shout "BINGO" loud enough to alert the caller to stop the game.
- Daubers must be used for all paper bingo games.
- Once the game is closed or the Caller starts to call the letter of the next ball, no previous BINGOs will be honored and the game shall continue.
- The number drawn and called is official. The bingo flashboard and TV monitor are for players' convenience only.
- Player's name must appear on their receipt and must be on display at all times.
- No seat saving. Only a bingo package and an admission receipt for the current session will hold a chair.
- It is the player's responsibility to look after all unplayed paper. No refunds or exchanges. Bingo paper is only valid for the session in which it was purchased.
- Multiple winners will share the total cash value for each game equally at each level.
- We will make every effort to avoid placing duplicate cards into play. However, if duplicates do occur, there will be no compensation offered.
- One electronic bingo device per guest.
- Malfunction of electronic bingo devices voids all pay and play. Management is not responsible for bingo equipment failure.
- Electronic bingo devices may not be purchased with another player's Club card.
- Any altered, mutilated or defaced bingo cards, pull-tabs or door prize tickets will not be honored.
- Only one door prize per person per session.
- Any bent door prize tickets are invalid for the door prize drawings.
- Door prize drawings for merchandise and certificates may not be redeemed for cash or exchanged.
- All door prizes must be claimed with a valid picture ID by the end of the bingo session; all unclaimed door prizes will be voided.
- For all fill-in-your-numbers style bingo games, a blue or black ink pen must be used and the numbers must be legible; otherwise the BINGO will be invalid.
- It is the player's responsibility to put the original copy of the fill-in-your-numbers style bingo games into the proper boxes at the end of the table (e.g. Pick 8, Pick Yur Platter, Do it Yourself). Boxes will then be locked and no other cards will be accepted.
- Bingo winners of \$1,200 or more and pull-tab winners of \$600 or more must have two forms of identification, a social security card and a valid picture ID to collect winnings.
- A valid picture ID is required when redeeming Fire Keeper's Club® card points, credit cards and debit cards at the admission booth.
- Talking must be kept to a minimum while BINGO is being played.
- While the bingo session is in progress, personal electronic devices (e.g. cell phones, pagers, etc.) may not be used in the Bingo Hall. Please turn off ringer and/or phone to avoid disruption of play.
- Verbal abuse or the use of abusive language will not be tolerated.
- Pull-tabs are void if taken out of the building.
- No food or beverages may be brought into the Bingo Hall from outside this building.
- Drugs are strictly prohibited in the Bingo Hall.
- No solicitation of any kind is allowed in the Bingo Hall.
- Potawatomi Hotel & Casino is not responsible for lost or misplaced admission receipts or bingo paper.
- Potawatomi Hotel & Casino is not responsible for lost or stolen articles.
- Management reserves the right to change bingo sessions, prize amounts and starting times without notice.
- Management reserves the right to refuse service to any person. If it becomes necessary to ask a player to leave, refund for purchases will not be made.
- Potawatomi Hotel & Casino is not responsible for typographical errors.
- The decision of Management is final.



1721 WEST CANAL STREET • MILWAUKEE, WI 53233 • 1-800-PAYSBIG • PAYSBIG.COM
 MUST BE AT LEAST 18 YEARS OLD TO PLAY BINGO • WINNERS RESPONSIBLE FOR ALL TAXES • MANAGEMENT RESERVES ALL RIGHTS • GAMBLING PROBLEM? CALL 1-800-426-2535
 ©2017 FOREST COUNTY POTAWATOMI COMMUNITY, WISCONSIN

BIN17017

Paper Buy-in:
6-on Level 1 - \$5
6-on Level 2 - \$13

Computer Buy-in:
12 Level 1 cards for \$10
12 Level 2 cards for \$26

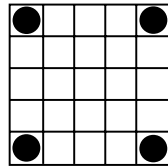
Special Pack: \$11

Hotball: \$1

Discount packages available on handheld computers

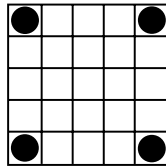
WARM-UPS

GAME 1
Straight Line
or Four Corners



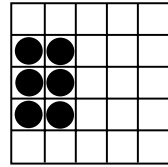
Prize: \$100

GAME 2
Straight Line
or Four Corners



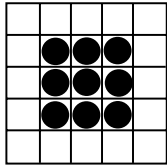
Prize: \$100

GAME 3
Six-Pack
Anywhere



Prize: \$100

GAME 4
Nine-Pack
Anywhere

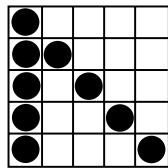


Prize: \$300

Same
Sheet

GAME 5
Crazy Bingo

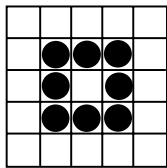
Two Straight Lines | 1st Number Wild



Prize: Level 1: \$200
Level 2: \$400
& Monitor

GAME 6
Floating Small Frame

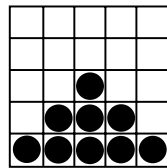
Anywhere



Prize: Level 1: \$200
Level 2: \$400
& Monitor

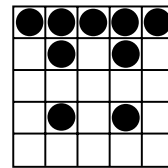
GAME 7
Crazy Pyramid

From Any Direction



Prize: Level 1: \$200
Level 2: \$400
& Monitor

GAME 8
One Horizontal Line
& Inside Corners



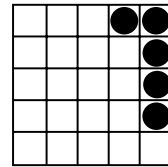
Prize: Level 1: \$200
Level 2: \$400
& Monitor

PULL TAB GAME

GAME 9

Five Around
The Corner

Not Included: \$1

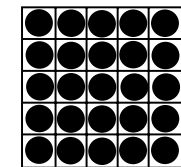


Prize: \$200
in Pull Tabs

3-SECOND SPECIAL

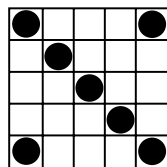
GAME 13
Coverall

Not Included: \$1



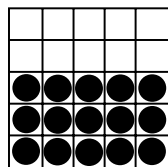
Prize: \$200

GAME 10
Double Bingo
4 Corners Count



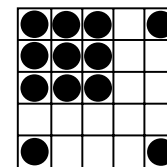
Prize: Level 1: \$200
Level 2: \$400
& Monitor

GAME 11
Top or Bottom
Top or Bottom 3 Lines



Prize: Level 1: \$200
Level 2: \$400
& Monitor

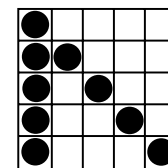
GAME 12
Block Party
Nine-Pack in any Corner



Prize: Level 1: \$200
Level 2: \$400
& Monitor

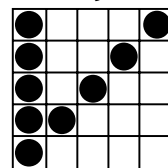
GAME 14
Crazy Bingo

Two Straight Lines | 1st Number Wild



Prize: Level 1: \$200
Level 2: \$400
& Monitor

GAME 15
One Vertical Line
& One Diagonal Line



Prize: Level 1: \$200
Level 2: \$400
& Monitor

POT OF GOLD SPECIAL

Not Included: \$3

GAME 16 · Match Three
Posted Amount or \$100

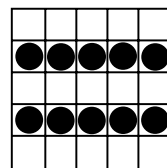
GAME 17 · Outline Diamond
Posted Amount or \$200

GAME 18 · Large Frame
Posted Amount or \$300

GAME 19 · Full Card
Posted Amount or \$500

Full Card in 46#’s or Less Pays
\$500,000 Paid in Annuity

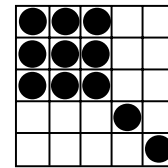
GAME 20
Crazy Railroad Tracks
2 Adjacent Horizontal Lines



Prize: Level 1: \$200
Level 2: \$400
& Monitor

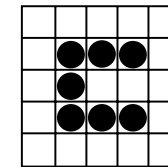
CHARITY SPECIAL

GAME 21
Crazy Large Kite
In Any Direction



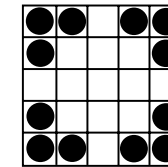
Prize: Level 1: \$200
Level 2: \$400
& Monitor

GAME 22
Crazy Horseshoe
Not Included: \$1



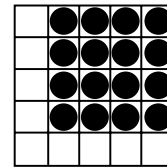
Prize:
50% to Winner
50% to Heart of
Canal Street

GAME 23
Four Brackets or
Filled-in Diamond



Prize: Level 1: \$200
Level 2: \$400
& Monitor

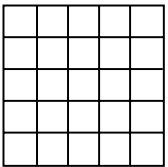
GAME 24
4x4
1st Number Wild | Anywhere



Prize: Level 1: \$400
Level 2: \$800
& Monitor

TBA SPECIAL

GAME 25
TBA
Game Changes Seasonally



Prize: TBA

ALL-STAR SPECIAL

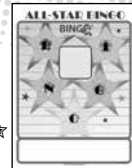
GAME 26 ★
Posted amount or \$100

GAME 27 ★★
Posted amount or \$200

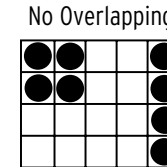
GAME 28 ★★★
Posted amount or \$300

GAME 29 ★★★★
Posted amount or \$400

GAME 30 ★★★★★
Progressive Jackpot or \$500
5★’s in 48 #’s or less wins a spin of the
jackpot wheel with a top prize of
\$1,000,000!

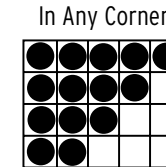


GAME 31
Line & Stamp
No Overlapping



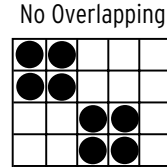
Prize: Level 1: \$200
Level 2: \$400
& Monitor

GAME 32
Crazy Large Triangle
In Any Corner



Prize: Level 1: \$200
Level 2: \$400
& Monitor

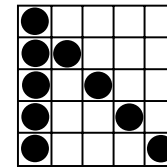
GAME 33
Two Floating Stamps
No Overlapping



Prize: Level 1: \$200
Level 2: \$400
& Monitor

GAME 34
Crazy Bingo

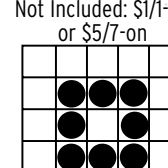
Two Straight Lines | 1st Number Wild



Prize: Level 1: \$200
Level 2: \$400
& Monitor

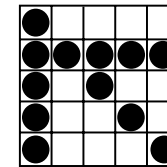
PICK 8 SPECIAL

GAME 35
Pick 8
Not Included: \$1/1-on
or \$5/7-on



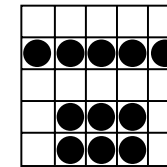
Prize: 20#’s or
Less Wins Jackpot
Must Go: \$500

GAME 36
Triple Bingo
3 Straight Lines



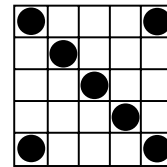
Prize: Level 1: \$200
Level 2: \$400
& Monitor

GAME 37
One Horizontal Line
& Six-Pack
No Overlapping



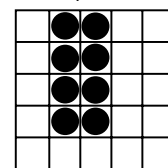
Prize: Level 1: \$200
Level 2: \$400
& Monitor

GAME 38
Double Bingo
Four Corners Count



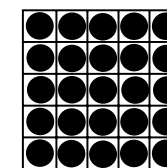
Prize: Level 1: \$200
Level 2: \$400
& Monitor

GAME 39
Block of Eight
Anywhere



Prize: Level 1: \$200
Level 2: \$400
& Monitor

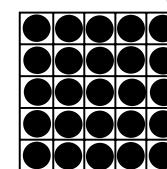
GAME 40
Coverall



Prize: Level 1: \$500
Level 2: \$1,000
& Monitor

BONANZA SPECIAL

GAME 41
Coverall



Prize: Jackpot or \$500
Filled card in 50#’s or less to
win Progressive Jackpot!